



www.trauma-academy.com

BioSkills Workshops at DKOU Berlin L5 – Pilon Masterclass

Thu, October 24th, 9am–1pm
in the Wetlab at DKOU2019, Hall 4.2

For Industry Partners

Agenda enables end-to-end Trauma Management

Date: October 24th

Demonstration: Pilon

Fracture: Distal Tibia

Procedure: *tbd*

Time	Agenda	Duration
09:00	Organise your plan Introduction & Welcome	15 min
09:15	Know your implants Industry Speed-Dating	25 min
09:40	Define your Plan Planning with X-ray, CT, 3D-prints	40 min
10:20	Operate your Plan Hands-on Wetlab Pilon	120 min
12:20	Defend your Plan Presentation & discussion of results	35 min
12:55	Closing	5 min



Strong team of involved parties to create excellence

Industry Partner



Faculty

Name	Prenome	Country	Status
Biberthaler	Peter	Germany	Confirmed
Hoffmann	Michael	Germany	Confirmed
Mittlmeier	Thomas	Germany	Confirmed
Von Recum	Jan	Germany	Confirmed
Seifert	Julia	Germany	Confirmed

Moderator

Bouillon	Bertil	Germany	Confirmed
----------	--------	---------	-----------

What to bring – roles & responsibilities



RIMASYS

Logistics

Industry Partner

OR Infrastructure

- ✓ Fully equipped working stations (covers, lighting, etc.)
- ✓ 3D C-Arm fluoroscopy by **SIEMENS Healthineers**
- ✓ Basic instruments
- ✓ Protective clothing
- ✓ Disposables (e.g., sutures, scalpels, etc.)
- ✓ Cleaning of instruments on request
- ✓ Presentation equipment (i.e., projector, speakers)

Prefracted Specimen

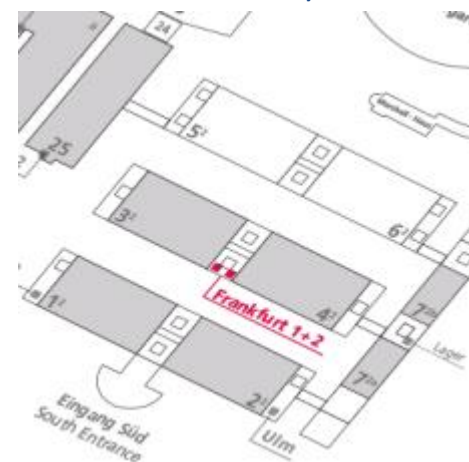
- ✓ Fresh-frozen pre-fractured specimen (Specimen fractured using exclusive RIMASYS fracture method/system)
- ✓ CT-scans
- ✓ 3D prints
- ✓ VR models

Delivery

- ✓ Fri 18th – Mon 21st between 8am – 8pm

Material storage

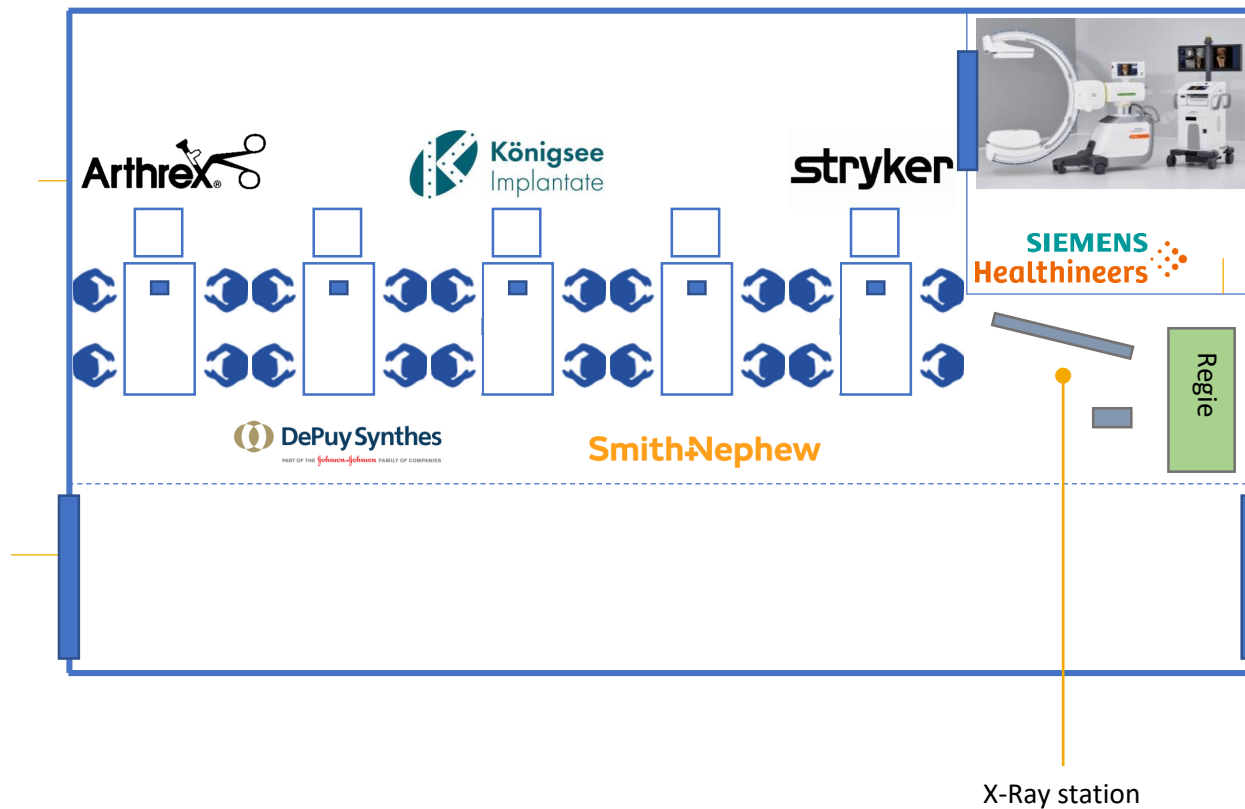
- ✓ Material storage room (03.02-003,,Frankfurt 1“, Standort: Zentralachse 3-4)








End-to-end trauma/orthopedic treatment implants & instruments:

- ✓ Implants (screws, plates, nails, wires, etc.)
- ✓ Extended instruments and power tools (drills, saws, etc.)
- ✓ Repositioning instruments
- ✓ Soft-Tissue Instruments
- ✓ Manpower (≥2)
- ✓ Registration at Wetlab 15min before start


BioSkills Workshops set-up at DKOU 2019



The „PILON“ – challenges at DKOU

Station 1	Station 2	Station 3	Station 4	Station 5
				
1 TBD	2 TBD	3 TBD	4 TBD	5 TBD

Working places – Pilon

	Station 1	Station 2	Station 3	Station 4	Station 5
Industry Partner					
Instructor	Hoffmann	von Recum	Seifert	Biberthaler	Mittlmeier
Participant 1	TBD	TBD	TBD	TBD	TBD
Participant 2	TBD	TBD	TBD	TBD	TBD
Participant 3	TBD	TBD	TBD	TBD	TBD

Disclaimer: Fractures generated by RIMASYS for surgical education

RIMASYS vision

Enhancing surgical education and patient outcomes by deploying realistic fractures for practical skill training

RIMASYS is the worldwide sole manufacturer of realistic fractures in human specimen:

- ✓ closed soft tissue
- ✓ reproducible fracture patterns
- ✓ according to common classifications

Usage of this document

- Traumata are established in **closed fresh-frozen human specimen** and **evaluated as realistic** by independent experts
- This document is intended to facilitate **end-to-end trauma management** for fracture course participants
- In order to **respect the body donors** you are asked to use this document for **educational and course related purposes only**

Specifications of specimen & fractures in this document

	Specimen ID	Fracture	Side	Sex	Age	Height [m]	Weight [kg]
1	L-190912-R	Distal Tibia	Right	Male	71	1,83	84
2	L-190905-L	Distal Tibia	Left	Male	65	1,73	55
3	S-191263-L	Distal Tibia	Left	Male	70	1,83	52
4	P-190711-L	Distal Tibia	Left	Female	75	1,68	60
5	P-190741-R	Distal Tibia	Right	Male	73	1,73	87

1

Post-fracturing – Distal Tibia (L-190912-R)

Extended specifications

Age	71
Height [m]	1,83
Weight [kg]	84
BMI	25
Sex	Male
Side	Right

Post-fracturing



1

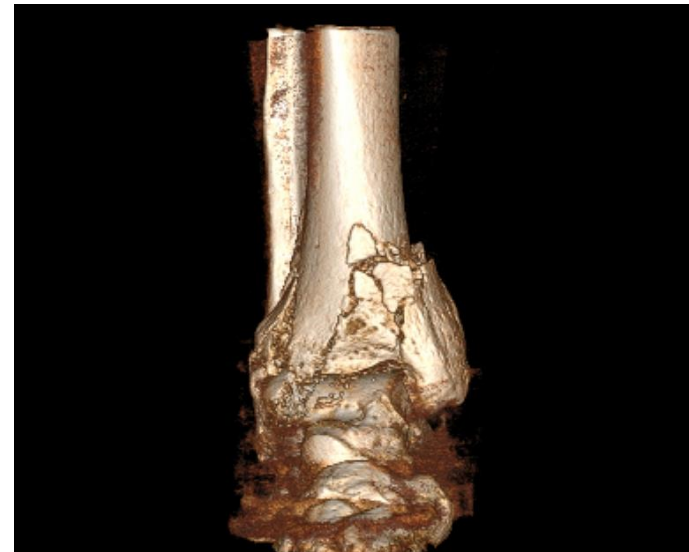
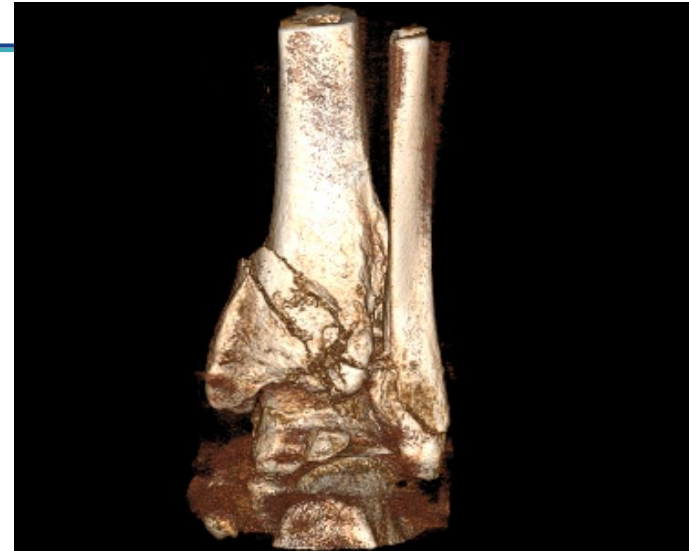
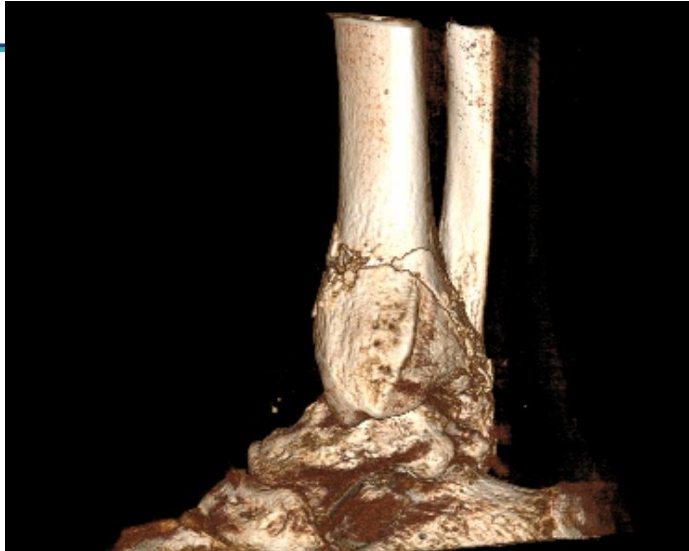
Post-fracturing – Distal Tibia (L-190912-R)

Anterior-Posterior



Lateral





segmentation for 3D prints will be submitted soon

2

Post-fracturing – Distal Tibia (L-190905-L)

Extended specifications

Age	65
Height [m]	173
Weight [kg]	55
BMI	19
Sex	Male
Side	Left

Post-fracturing



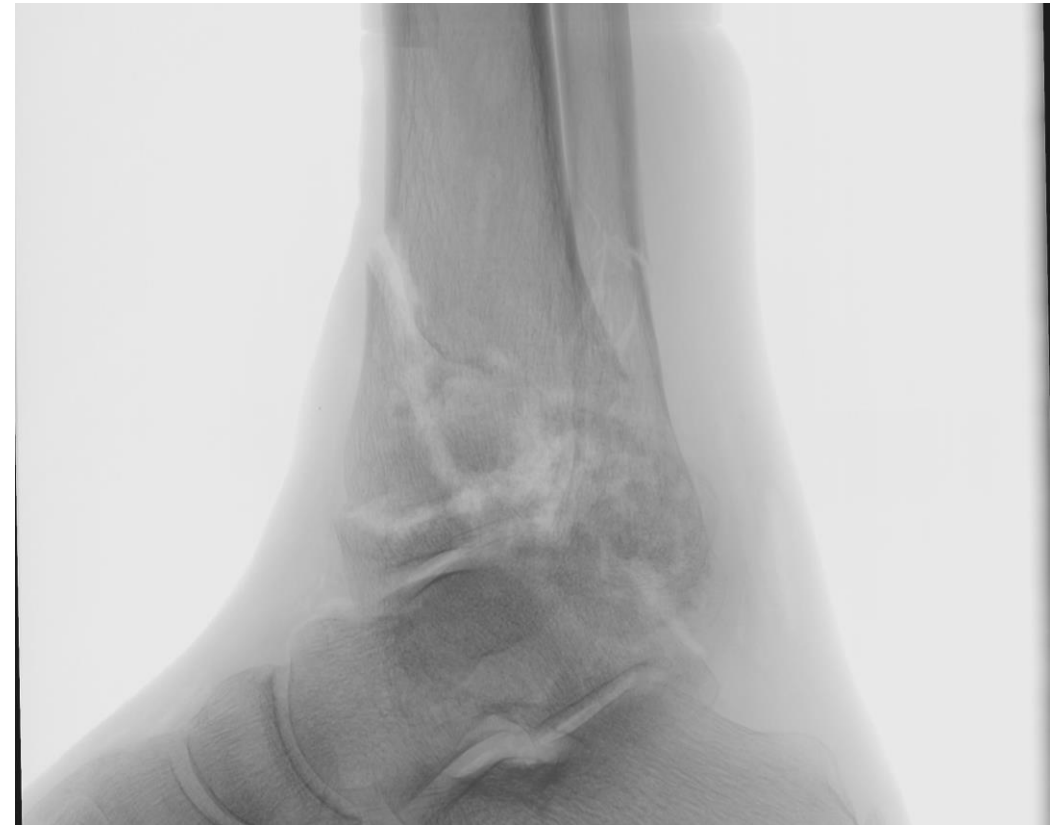
2

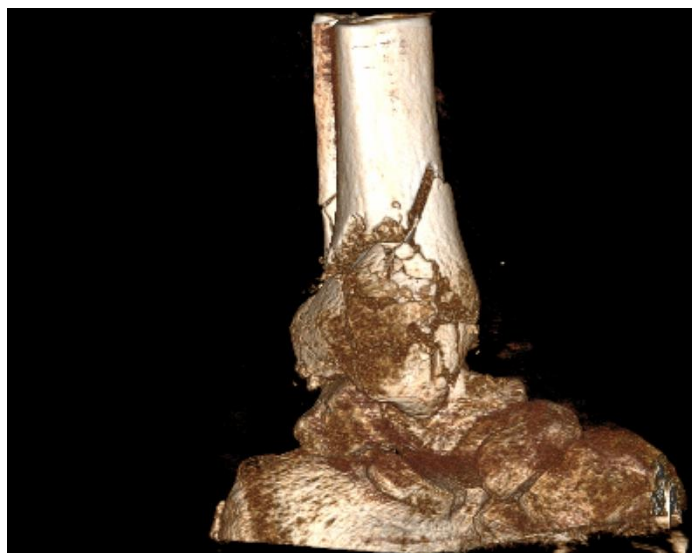
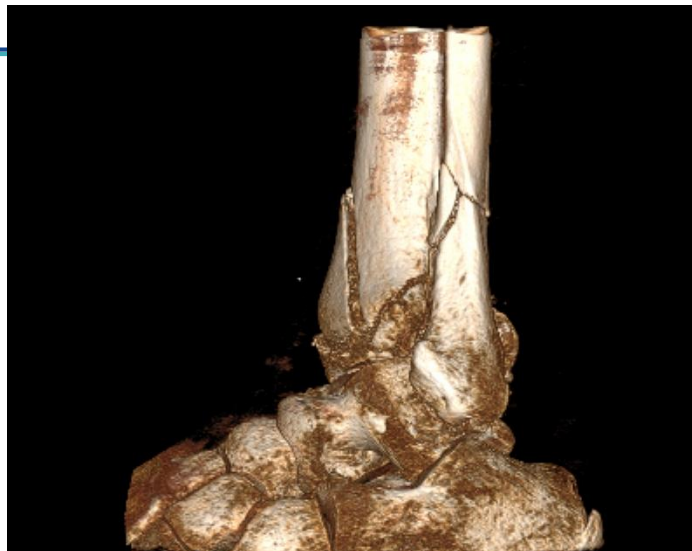
Post-fracturing – Distal Tibia (L-190905-L)

Anterior-Posterior



Lateral





segmentation for 3D prints will be submitted soon

3

Post-fracturing – Distal Tibia (S-191263-L)

Extended specifications

Age	70
Height [m]	1,83
Weight [kg]	52
BMI	16
Sex	Male
Side	Left

Post-fracturing



3

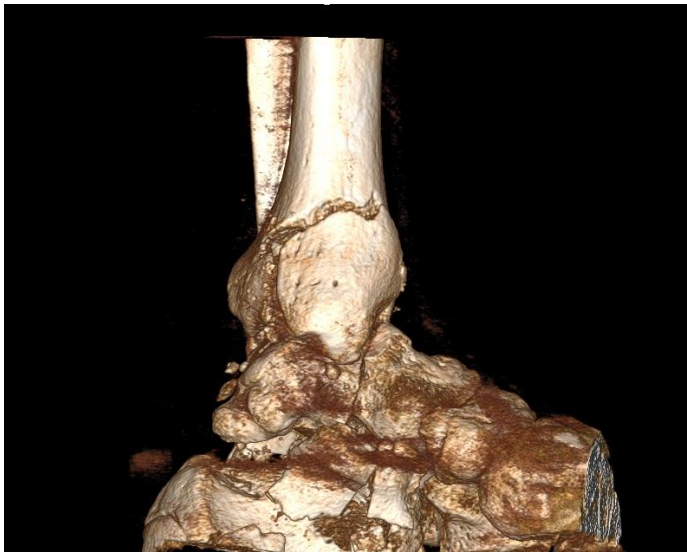
Post-fracturing – Distal Tibia (S-191263-L)

Anterior-Posterior



Lateral





segmentation for 3D prints will be submitted soon

4

Post-fracturing – Distal Tibia (P-190711-L)

Extended specifications

Age	75
Height [m]	1,68
Weight [kg]	60
BMI	21
Sex	Female
Side	Left

Post-fracturing



4

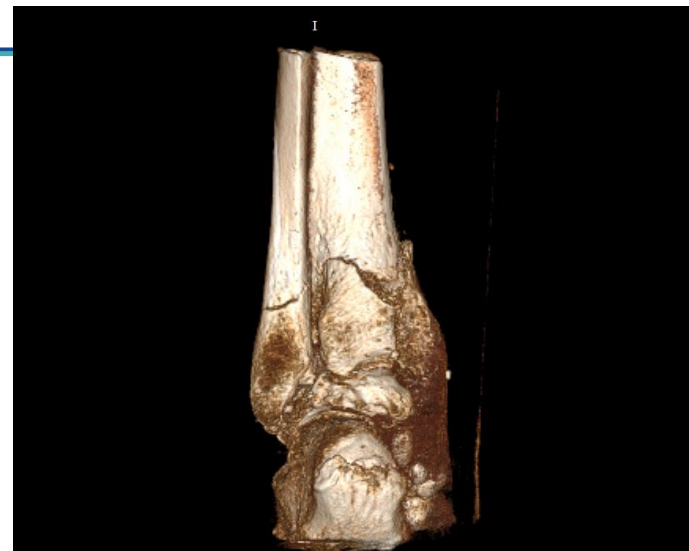
Post-fracturing – Distal Tibia (P-190711-L)

Anterior-Posterior



Lateral





segmentation for 3D prints will be submitted soon

5

Post-fracturing – Distal Tibia (P-190741-R)

Extended specifications

Age	73
Height [m]	1,73
Weight [kg]	87
BMI	29
Sex	Male
Side	Right

Post-fracturing



5

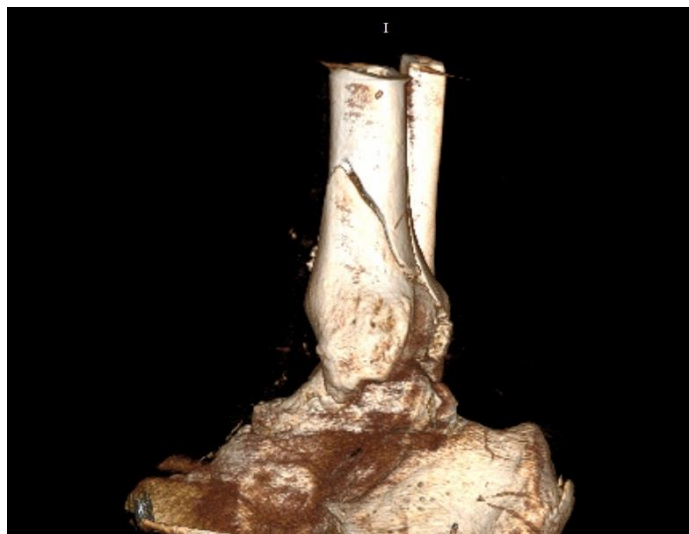
Post-fracturing – Distal Tibia (P-190741-R)

Anterior-Posterior



Lateral





segmentation for 3D prints will be submitted soon

L5 – Pilon Masterclass BioSkills Workshop at DKOU 2019

***Let's elevate surgical
education to the next level.***



**Trauma
Academy**

ENABLING EXCELLENCE

TRAUMA ACADEMY

c/o RIMASYS GmbH
Nattermannallee 1
50829 Cologne
GERMANY

Mail: admin@trauma-academy.com

Managing director: Marc Ebinger, Robert Holz

Explore more via www.trauma-academy.com